



Innovating Package Solution

VERTICAL FLOODED CONCEPT



10 years of innovating concepts
No steam PRV Station
No steam Safety relief to roof
No pumping sub-station

Building heat
steam → liquid



**MAXI
THERM**

maxi-therm.net

All major components are fabricated in the U.S.A





1200 US GPM Glycol
120° F → 185° F
Steam supply @ 175 psig
Back pressure 20 psig
Yearly Energy savings 60 K \$
Green House gases reduction 15%

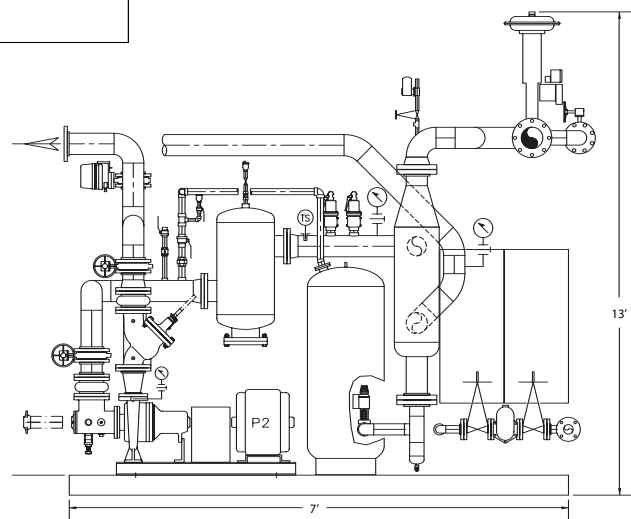
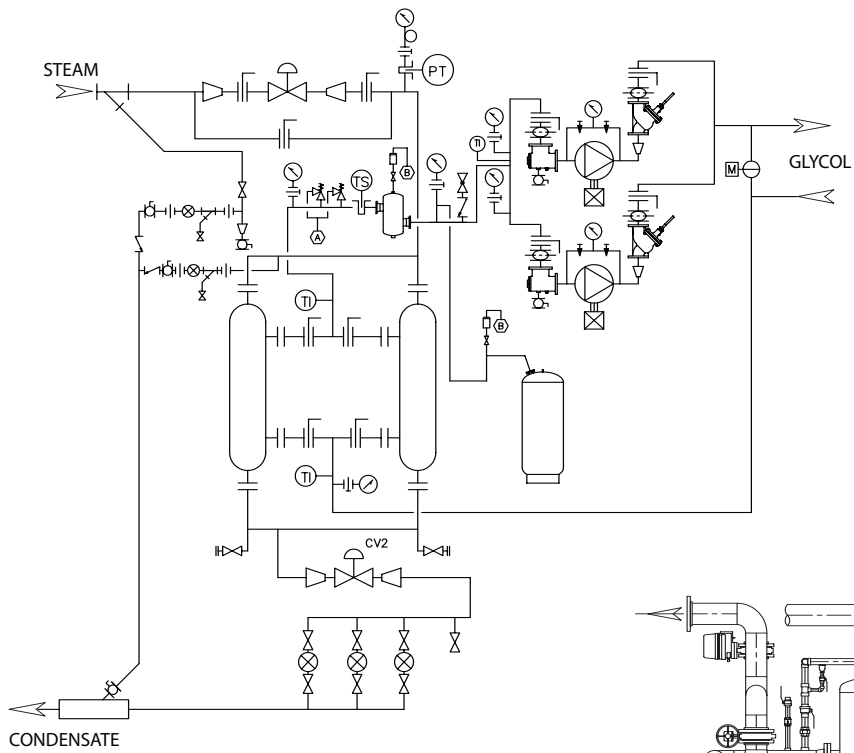
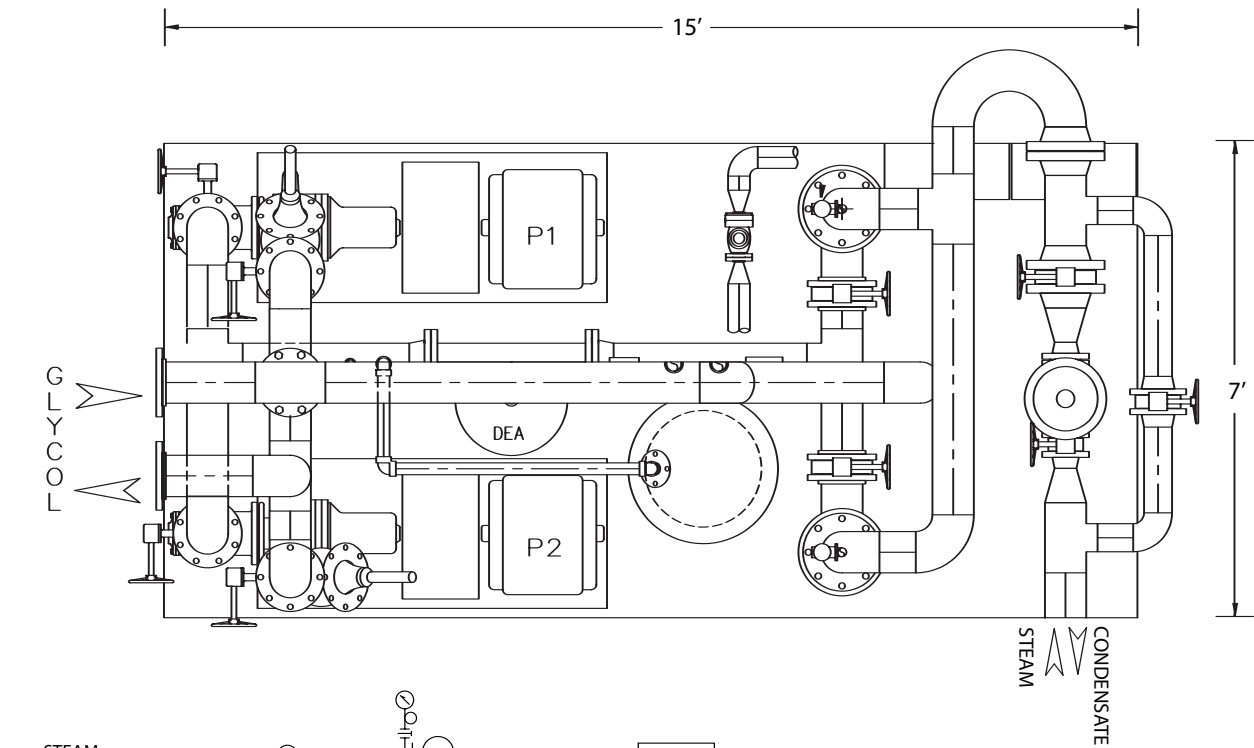
Installation cost saving 80 K
Floor space 15' x 7' x 13' H
Including 2-75 HP circulating pumps
Expansion tank
Air separator
Control panel
Piping & accessories

Not Required No steam PRV station
No steam safety relief to roof
No pumping sub-station

Energy Savings & Green House Gases reduction a result of using latent & sensible heat of steam, subcooling condensate to 200°F (no flash steam)

Stability – of liquid set point temperature $\pm 2^\circ\text{F}$, on variable load condition







Building Heat: 440 US gpm ; 160° F → 180 ° F
 Steam @ 60 psig ; Floor space 4' x 2'
 Back pressure 8 psig



Building Heat: 175 US gpm Glycol ; 55° F → 95 ° F
 Back pressure 10 psig ; steam @ 110 psig
 Floor space 4' x 6' x 7' H
 c/w circulating pumps, expansion tank,
 air separator, control panel



Domestic: 100 US gpm ; 40° F → 140 ° F
 Steam @ 125 psig ; Floor space 3' x 2'
 Back pressure 5 psig



Humidification / sterilisation
 Steam to steam: 1400 lbs/hr
 Steam supply @ 110 psig ; Back pressure 15 psig
 Floor space 9' x 4'



Montréal
 T 514.351.1001
 F 514.351.1515
info@maxi-therm.net