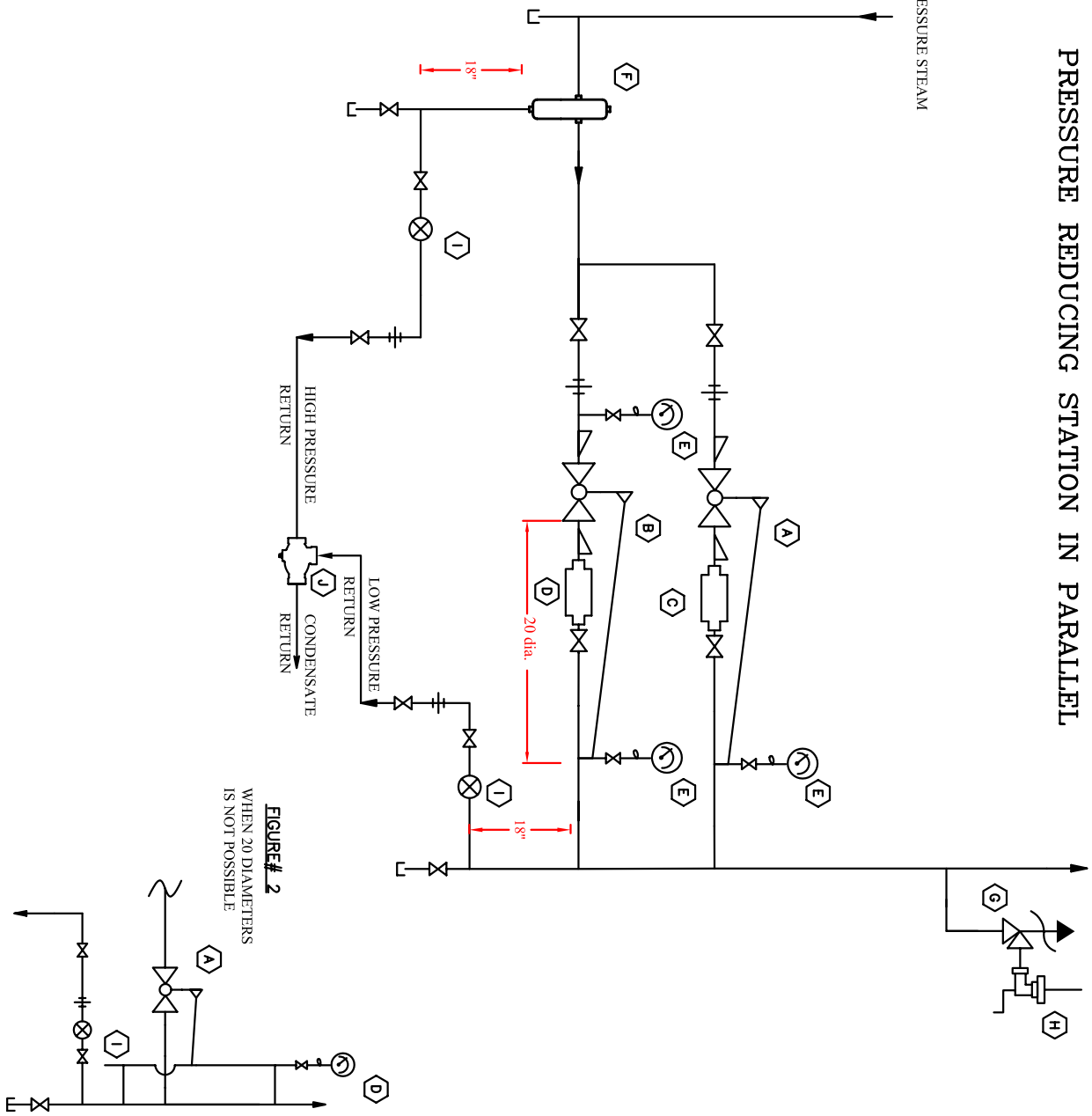


LOW PRESSURE STEAM

# PRESSURE REDUCING STATION IN PARALLEL

HIGH PRESSURE STEAM



**FIGURE# 2**  
WHEN 20 DIAMETERS  
IS NOT POSSIBLE

## ITEMS

<b>A</b>	REDUCING VALVE
<b>B</b>	REDUCING VALVE
<b>C</b>	NOISE REDUCER
<b>D</b>	NOISE REDUCER
<b>E</b>	PRESSURE GAUGE
<b>F</b>	SEPARATOR
<b>G</b>	SAFETY VALVE
<b>H</b>	DRIP PAN ELBOW (SEE DRAWING. M.T.-35-A)
<b>I</b>	STEAM TRAP WITH STRAINER
<b>J</b>	MIXER (SEE DRAWING M.T.-29-A)

**NOTE:**  
1. SAME DIAMETER AS THE OUTLET OF THE EQUIPMENT  
2. SAME DIAMETER AS THE OUTLET OF THE EQUIPMENT AND NON INSULATED

**CUSTOMER:**

**PROJECT:**

**TITLE:**  
PRESSURE REDUCING STATION  
IN PARALLEL

<b>DWG.NO.:</b> M.T.-02B-A	<b>REV.NO.:</b>
<b>DATE:</b> 03-12-2004	

