

ITEMS

(A)	HUMIDIFIER
(B)	CONTROL VALVE
(C)	SEPARATOR
(D)	STEAM TRAP WITH STRAINER
(E)	THERMOSTATIC STEAM TRAP
(F)	COOLER

IF THE RETURN CANNOT BE BY GRAVITY, PROVIDE THE RETURN WITH THE HELP OF A PUMP OR INSTALL A SAFETY DRAIN. REFERENCE DRAWINGS M.T.-4,13,14 & 16

- NOTE:
1. SAME DIAMETER AS THE OUTLET OF THE EQUIPMENT
 2. SAME DIAMETER AS THE OUTLET OF THE EQUIPMENT AND NON INSULATED
 3. DRAIN DURING SHUT DOWN

CUSTOMER:

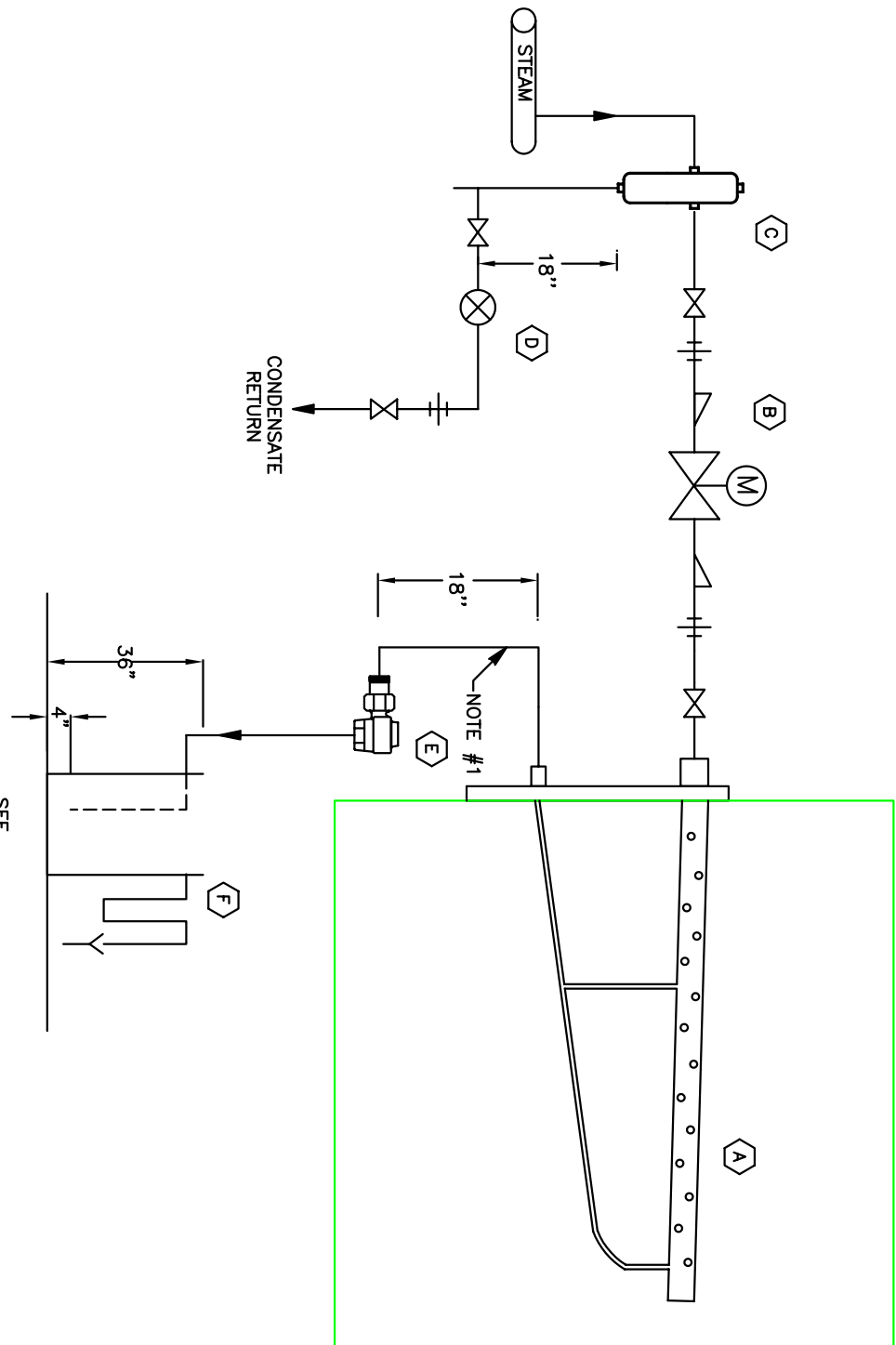
PROJECT:

TITLE:

HUMIDIFICATION
SIMPLE DISTRIBUTOR

DWG. No.: M.T.-30-A REV. No.: 00

DATE: 15-12-2004



SEE
DRAWING M.T.-37-A