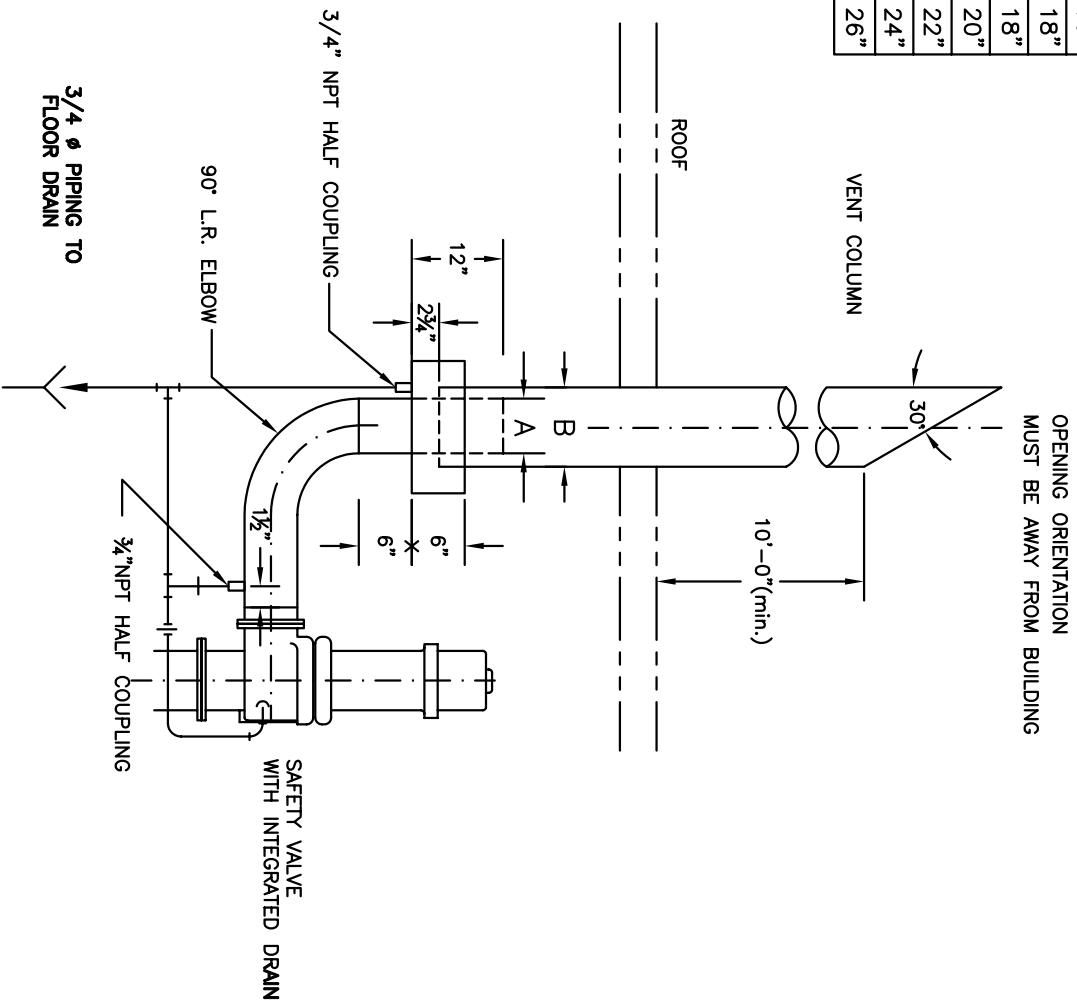


A	B	C
2"	4"	10"
2 1/2"	6"	10"
3"	6"	12"
4"	8"	14"
6"	10"	16"
8"	12"	18"
10"	14"	18"
12"	16"	20"
14"	18"	22"
16"	20"	24"
18"	22"	26"



NOTE:

1. THE MEASUREMENTS ARE BASED ON THE STANDARD TYPE STEEL PIPING
2. THE VENT PIPE MUST BE SUPPORTED INDEPENDENTLY OF THE DRAIN LINES, AND THE DISCHARGE PIPING MUST BE ADEQUATELY BRASSED AND ANCHORED TO RESIST THRUSTS OF THE DISCHARGED FLOW.
3. ISOLATION FOR THE VENT COLUMN MUST CORRESPOND TO THE REQUIREMENTS FOR THE PROTECTION OF THE STAFF ONLY
4. IF THE DRIP PAN ELBOW IS NOT CONNECTED DIRECTLY TO THE RELIEF VALVE, THE PIPE JOINING THEM MUST BE SUPPORTED SO THAT NO STRESSES ARE TRANSMITTED TO THE DISCHARGED FLANGE.
5. THE INTERVAL BETWEEN THE DISCHARGE OF THE SAFETY VALVE AND THE VENT COLUMN MUST CORRESPOND TO THE CALCULATED DIMENSION OF THE EXPANSION SPECIFIED ON THE PIPING DRAWINGS.

CUSTOMER:		
PROJECT:		
TITLE:		SAFETY VALVE DISCHARGE WITH CONDENSATE PAN
DWG. NO.	M.T.-35-A	REV. NO.
DATE:	16-12-2004	

